

# YOU WERE MEANT FOR ME

**Con moto**

(DON:) A beautiful sunset.

(DON runs to the light board switch and starts pulling levers down. The stage is gradually flooded with shafts of light, creating an atmosphere of outdoors, a soft, rosy evening glow.) (DON:) Colored lights in a garden.

(DON pulls more light switches and stronger beams of several colors spill around them.)

(DON:) A lady is standing on her balcony in a rose-trellised bower, flooded with moonlight.

**A tempo** **Freely**

4

(DON moves a ladder downstage, leads KATHY to it, helps her climb it. The lights change to moonlight.)

(DON:) You look lovely in the moonlight, Kathy...

KATHY: Now that you have the proper setting, can you say it?

DON: I'll try.

9

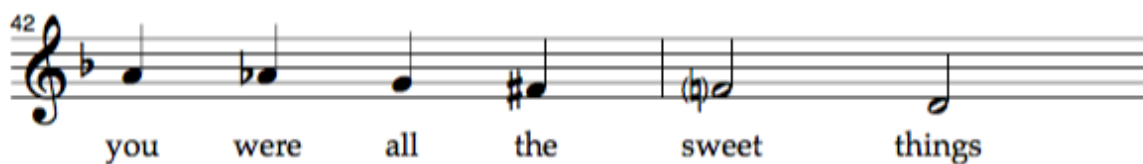
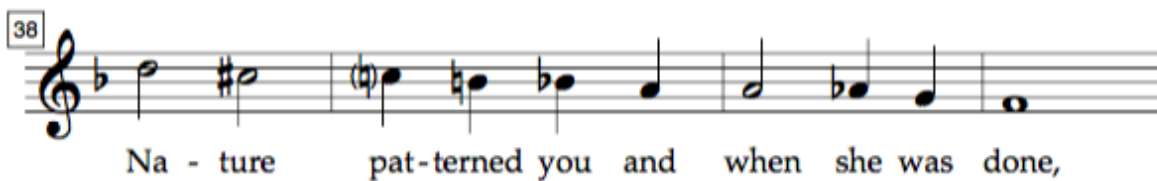
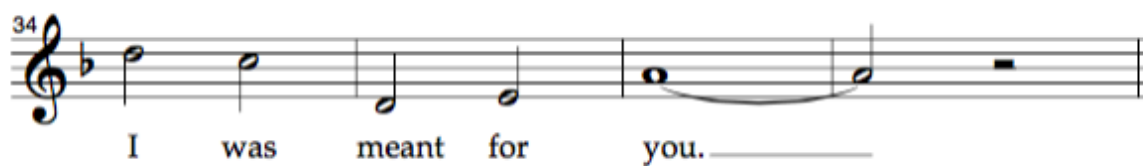
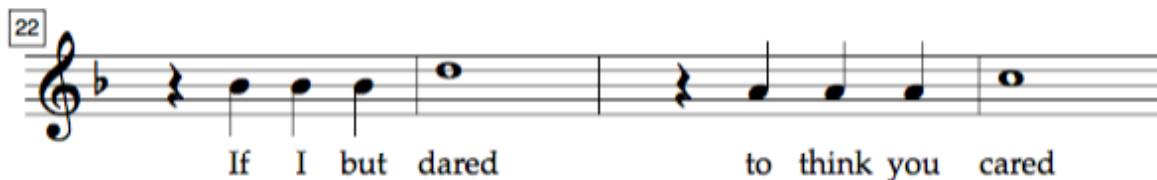
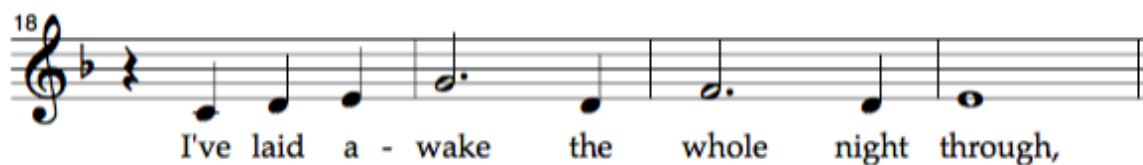
4

Start here!

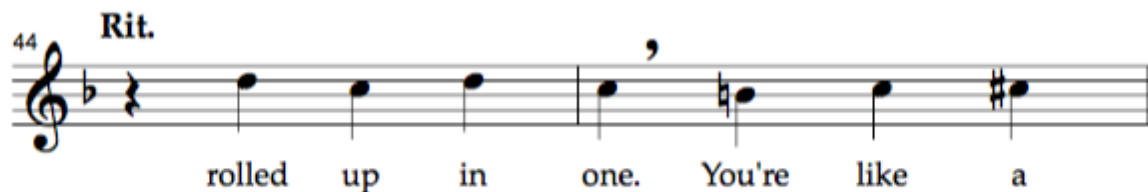
**Moderate Slow 2**

14 (DON:)

Life was a song, you came a - long

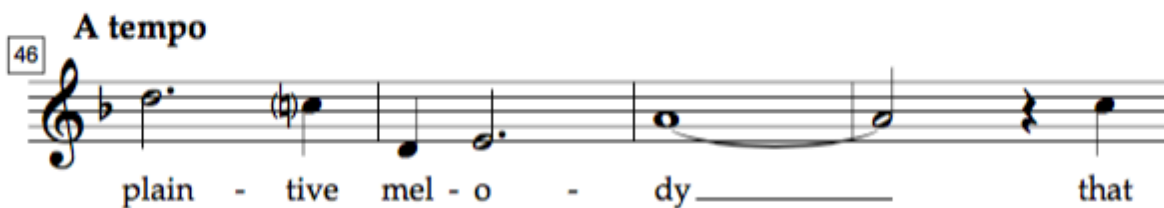


44 **Rit.**



rolled up in one. You're like a

46 **A tempo**



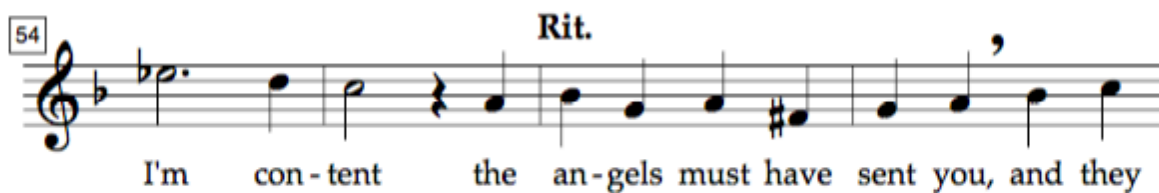
plain - tive mel - o - dy \_\_\_\_\_ that

50



nev - er lets me free. \_\_\_\_\_ But,

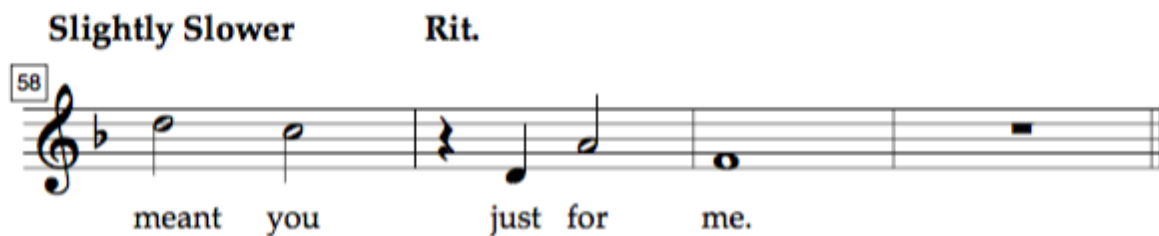
54 **Rit.**



I'm con - tent the an - gels must have sent you, and they

**Slightly Slower** **Rit.**

58



meant you just for me.